

Figure 13. Big saucer-like replica cupule, RC-2 created in 2002.

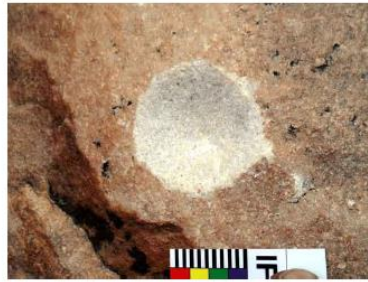


Figure 14. Small circular cupule with conical depth, RC-6 created in 2008.

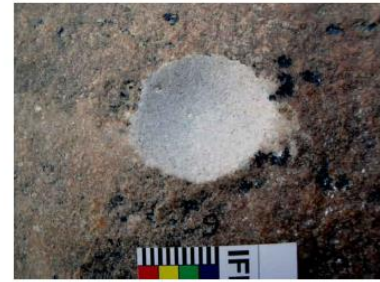


Figure 15. Small circular cupule with conical depth, RC-9 created in 2009.



Figure 16. Roughly triangular form of cupule, RC-10 created in January 2012.

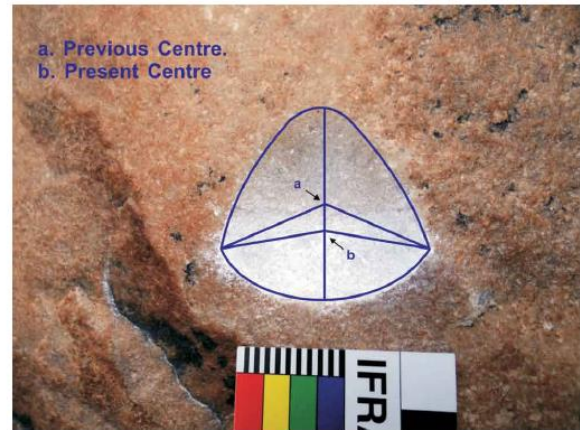


Figure 17. Figure showing the shifting of the centre point of the replicated cupule to 4.5 mm downwards on the vertical length of RC-10.



Figure 18. Hammerstone after its use in creation of big saucer-shaped cupule RC-2.



Figure 20. (a) One of the hammerstones used for replication of RC-9; (b) close up of the striking head of the same.



Figure 19 (left). Hammerstone after its use in creation of cupule RC-5.